

APPENDIX I

BUFFALO CREEK VALLEY IMPORTANT BIRD AREA INFORMATION

PENNSYLVANIA IMPORTANT BIRD AREAS

SITE NAME BUFFALO CREEK VALLEY

COUNTY BUTLER, ARMSTRONG

SITE # 22

APPROX. SIZE 10,000 ACRES

OWNERSHIP PRIVATE

LAT. 40°46' **LONG.** 79°40'

DESCRIPTION

This site includes Buffalo Creek, Little Buffalo Creek, Complanter Run, Rough Run, Snipes Run, Patterson Creek, and Marrowbone Run. The deep "canyons" of Little Buffalo and Buffalo creeks are largely wooded and contain extensive tracts of hemlock, moist deciduous forest, and large stands of American Sycamore. These valleys contain some of the best bird habitat and most interesting scenery in the area. The site focuses on Buffalo Creek and its tributaries, but also continues into upland areas where forests are relatively unfragmented.

Directions: From Freeport, follow Rt. 356 W to Rt. 28 N. Turn left onto SR 3023, follow into the core of the site at Iron Bridge.

BIRDS - SUMMARY

The area is characterized as a mixing zone between southern (Yellow-throated Warbler, Cerulean Warbler, Yellow-throated Vireo, Acadian Flycatcher) and northern (Magnolia Warbler, Brown Creeper, Purple Finch) fauna. The avifauna mirrors the diversity and intact character of the site.

REPRESENTATIVE BIRDS - BY CRITERIA

- 1e Regionally significant populations of Neotropical forest interior migrants and resident forest species: warblers, flycatchers, thrushes, tanager, vireos, nuthatch, parids, etc.

- 4a 4b Exceptional habitat for resident forest, Neotropical forest interior, and migrant species; includes species that are sensitive (Cerulean Warbler), limited by habitat size (Pileated Woodpecker).

- 5 Todd Sanctuary has been the site of several avian and ecological studies.

CONSERVATION / ADDITIONAL NOTES

Natural pests and disease, recreational development / overuse, and excessive or inappropriate forestry practices are all potential threats to the site. Buffalo Creek Valley runs adjacent to Todd Sanctuary. The sanctuary is managed as a natural area, protecting the upland and ravine forests typical to the area. Buffalo Creek Valley has been recognized as an area of high biological diversity and rare/endorsed species.

Todd Sanctuary is owned and operated by Audubon Society of Western Pennsylvania.

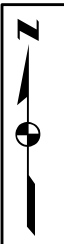
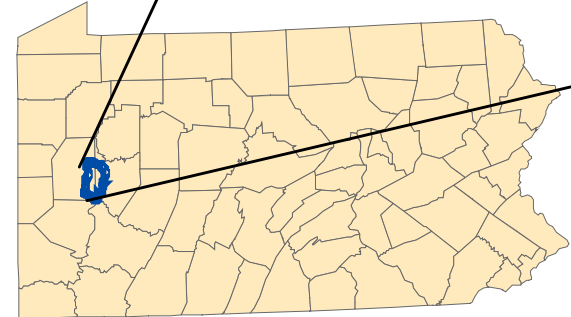
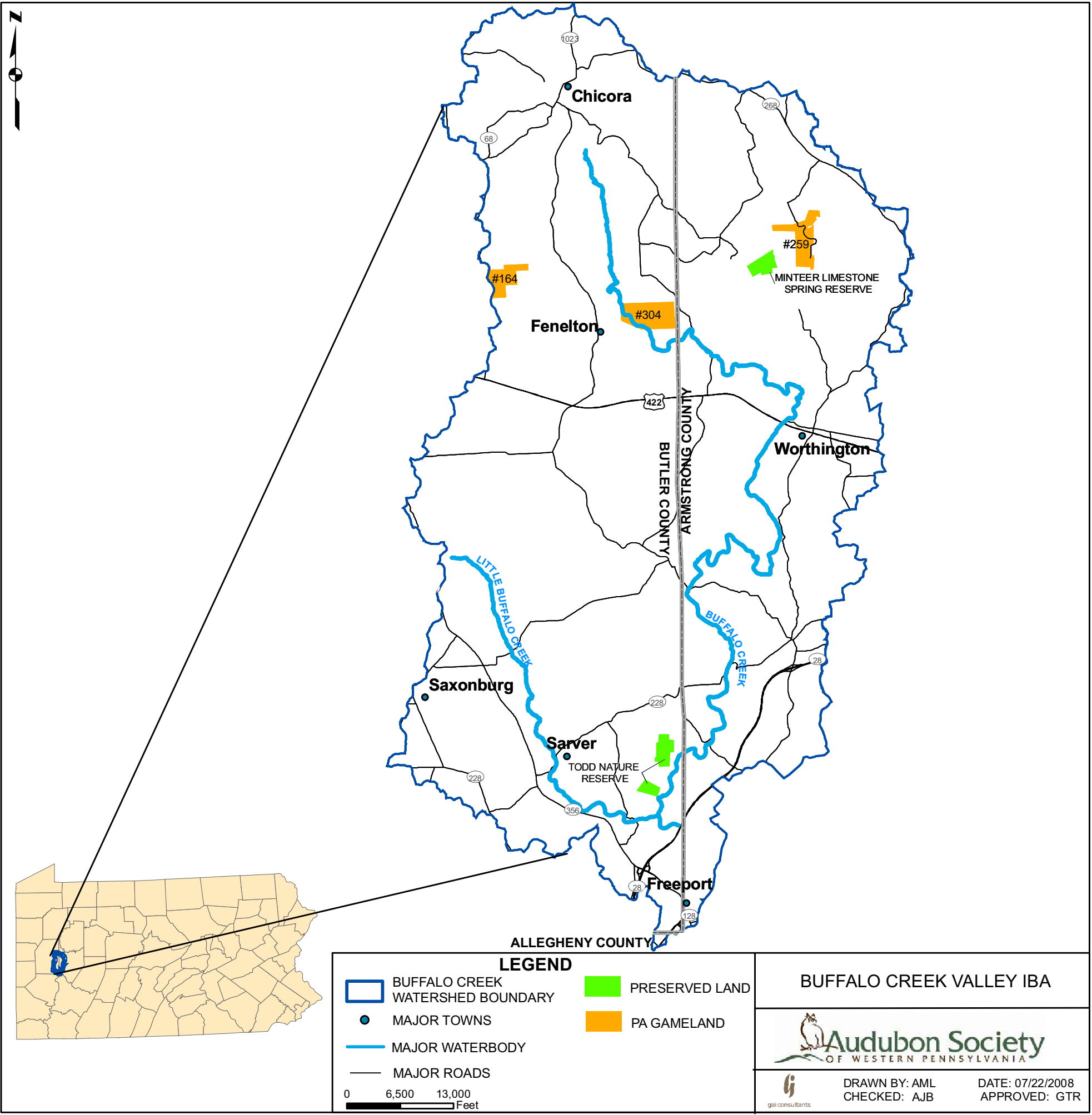
LOCAL CONTACTS

Charles Bier, W. PA Conservancy, (412) 281-1487

Mark McKellar, Aud. Soc. of W. PA, (412)-963-6100

SUBMITTED BY:

Charles Bier



1023

Chicora

68

#164

Fenelon

#304

268

#259

MINTEER LIMESTONE
SPRING RESERVE

422

BUTLER COUNTY
ARMSTRONG COUNTY

Worthington

LITTLE BUFFALO CREEK

Saxonburg

BUFFALO CREEK

Sarver

TODD NATURE
RESERVE

228

228

356

Freeport

ALLEGHENY COUNTY

BUFFALO CREEK VALLEY IBA



DRAWN BY: AML
CHECKED: AJB

DATE: 07/22/2008
APPROVED: GTR